


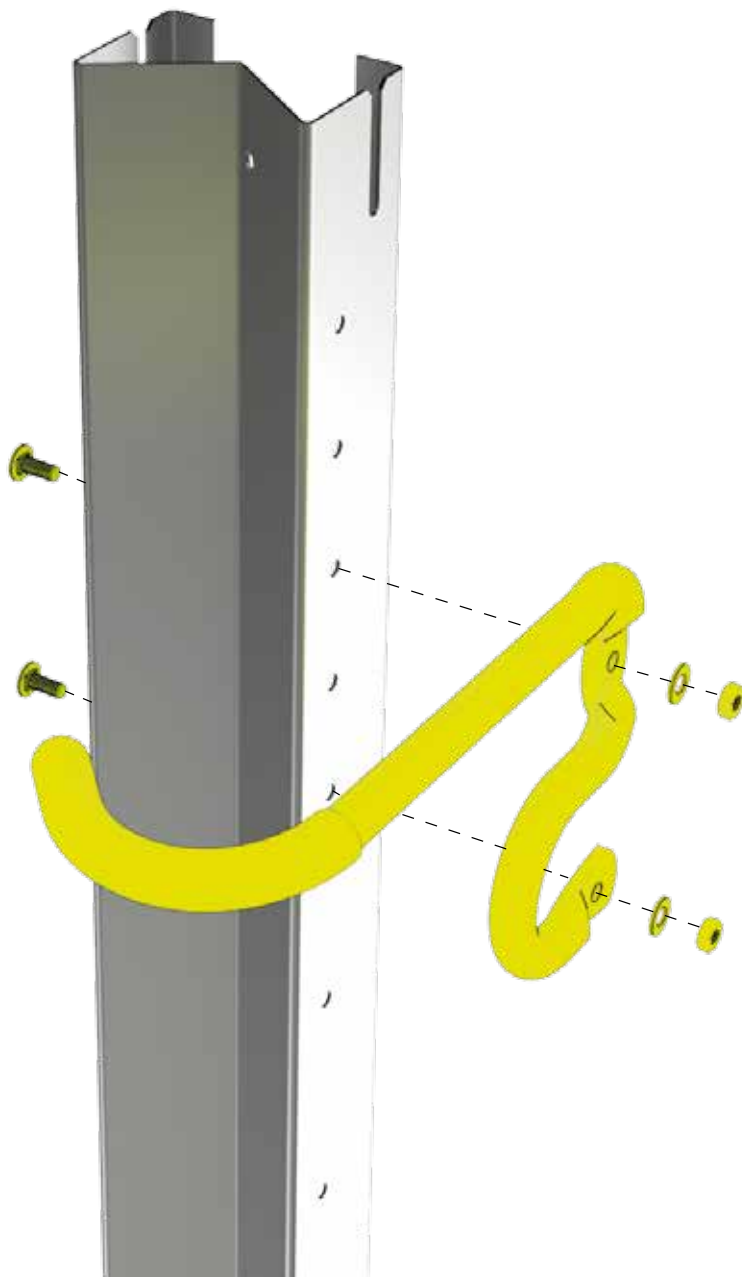


## DE Aufbauanleitung „BikeMax“

- Ⓞ GB Assembly manual for “BikeMax”
- Ⓞ FR Notice de montage du “BikeMax”
- Ⓞ NL Opbouwbeschrijving voor “BikeMax”
- Ⓞ ES Instrucciones de montaje de “BikeMax”
- Ⓞ IT Istruzioni di montaggio “BikeMax”
- Ⓞ DK Monteringsvejledning for “BikeMax”

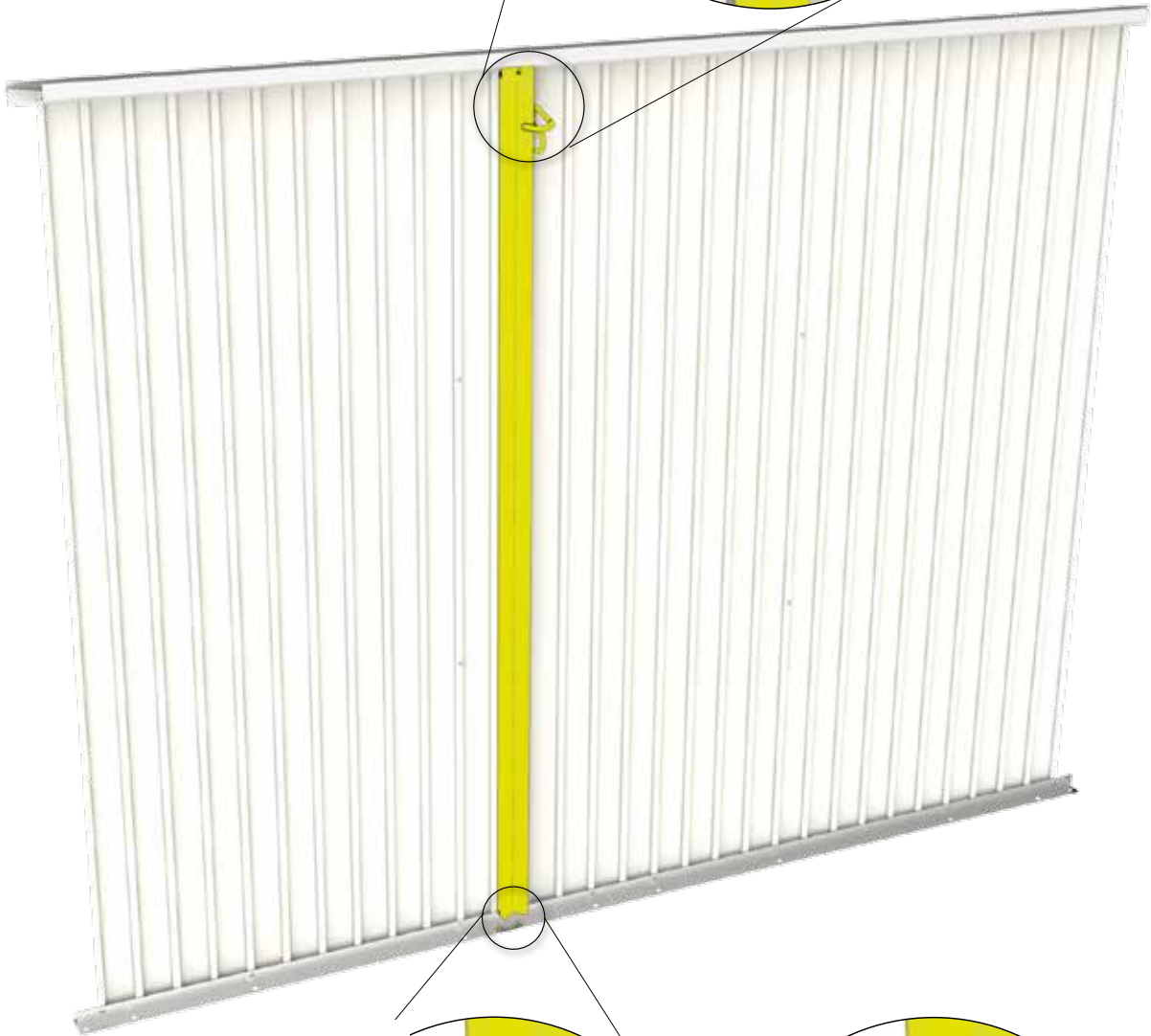


<p><b>1.</b></p> 	<p>1x</p>		<p>1x</p>	<p>M4 x 10</p> 	<p>2x</p>
--	-----------	---	-----------	--	-----------

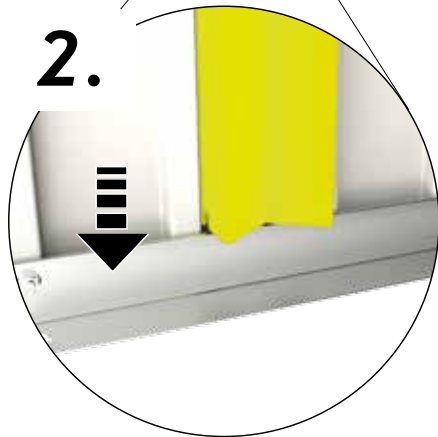


2.

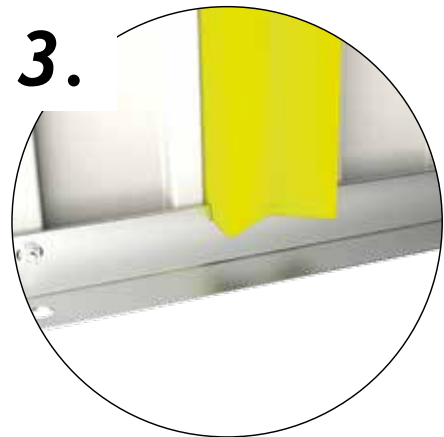
1.



2.



3.



3.

5,5 x 19



1x



Y1049010  
Version 01 / 2018

Kontrollnummer:  
Control-number / Contrôle-Qualité / Controlnummer:

Bei Reklamationen bitte anführen:  
Kontrollnummer und Artikelnummer des reklamierten Teils.

GB: In case of complaint please indicate the control-number and the number of the item, which is subject of complaint.

F: Pour toutes réclamations: prière de joindre le numéro de contrôle et le numéro d'article de la pièce litigieuse.

NL: Bij reclamaties svp doorgeven: controlnummer en artikelnummer van het desbetreffende onderdeel.



**Biohort GmbH**

Pürnstein 43, 4120 Neufelden, Österreich

Tel.: +43-7282-7788-0, Fax-DW: 190

E-Mail: office@biohort.at, www.biohort.com